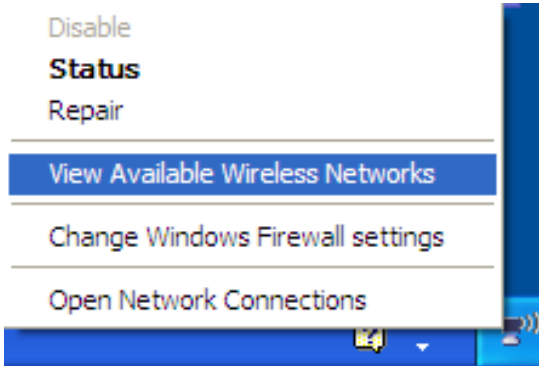


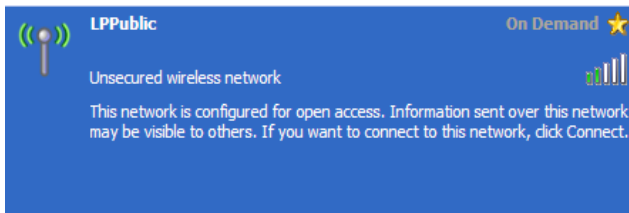
WINDOWS XP



1. Right-click the wireless network icon in the lower right corner of your screen, and then click View **Available Wireless Networks**.



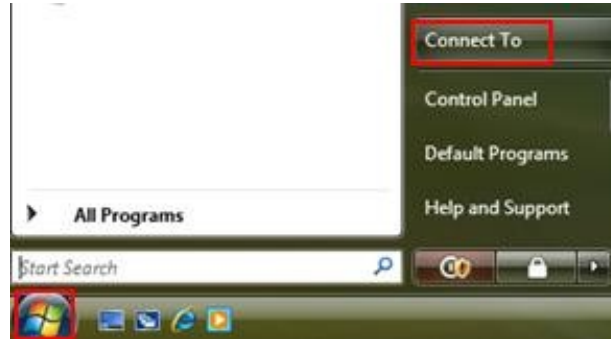
2. A list of wireless networks will appear. Select your library's wireless network. Ask a staff member if you do not know the name of the network.



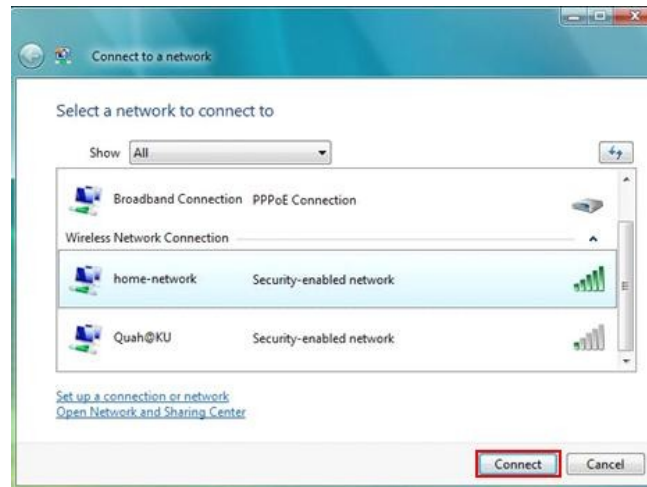
3. If you do not see your library's wireless network click on **Refresh network list** on the top left corner.
4. Your computer will try to acquire a network address. After a couple of seconds your computer should be connected to the library's Wi-Fi.

Windows Vista

1. Click on the **Start** button and then click on **Connect To**.



2. A list of wireless networks will appear. Select your library's wireless network. Ask a staff member if you do not know the name of the network.



3. If you do not see your library's wireless network click on Refresh network list icon on the top right corner.
4. Once you connect to the wireless network, the connection will show **Connected**

Windows 7

1. Click on the **Wireless network icon** in the lower right corner of your screen.




2. A list of wireless networks will appear. Select your library's wireless network. Ask a staff member if you do not know the name of the network.

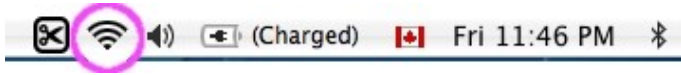


3. You will notice that the strength signal is now white meaning you are connected.

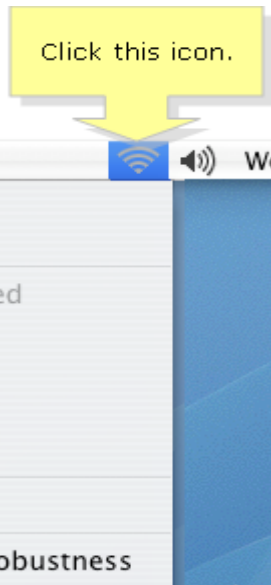


MAC OS X

1. Click on the **AirPort** icon  on the top right corner of your screen.



2. A list of wireless networks will appear. Select your library's wireless network. Ask a staff member if you do not know the name of the network.



3. Once connected, the AirPort icon will have solid black lines indicating the signal strength.

Disclaimer: The library is not responsible for any loss of data or damage that might occur to your computer as a result of connecting to our wireless network.

Frequently Asked Questions

1. I can't see the wireless network icon? What do I do?

Make sure that you have a wireless network card. If you are unsure if your computer has a wireless network card contact your computer tech support.

2. I have a wireless network but I still can't connect to your network.

Make sure your drivers are up to date. You should be able to download the drivers for your wireless network card from the manufacturer's website.

3. I receive a message that says Windows cannot configure this wireless connection?

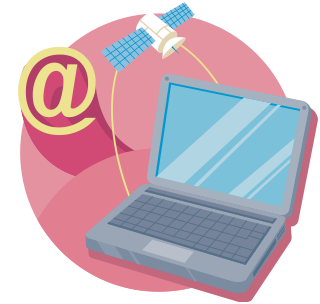
Check to see if your wireless connections are being managed by a different software. If this is the case please contact your computer's manufacturer support team.

Additional Resources and Links

<http://support.microsoft.com/>

<http://www.apple.com/support/>

<http://www.microsoft.com/windowsxp/using/networking/setup/wireless.mspx>



Using WiFi @ your Library

A quick guide on how to connect to the library's wireless internet.



This brochure is provided by the Colorado State Library and was originally developed by the High Plains Library District.